

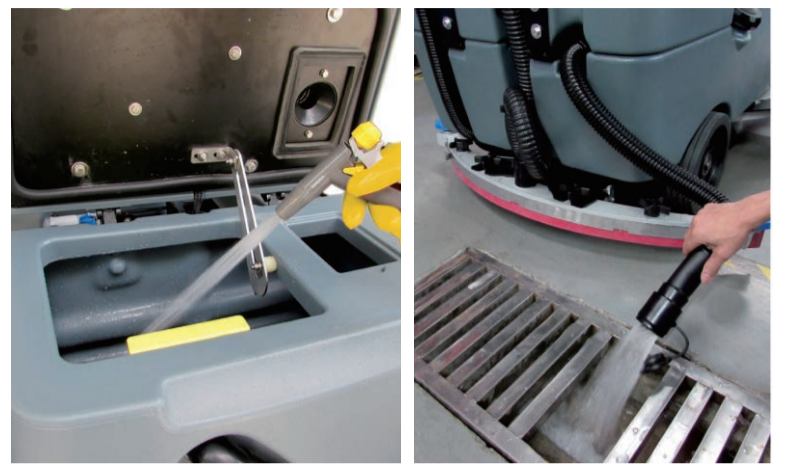
RS26+ / RS32+ / RS32L+ / RS26L+

1



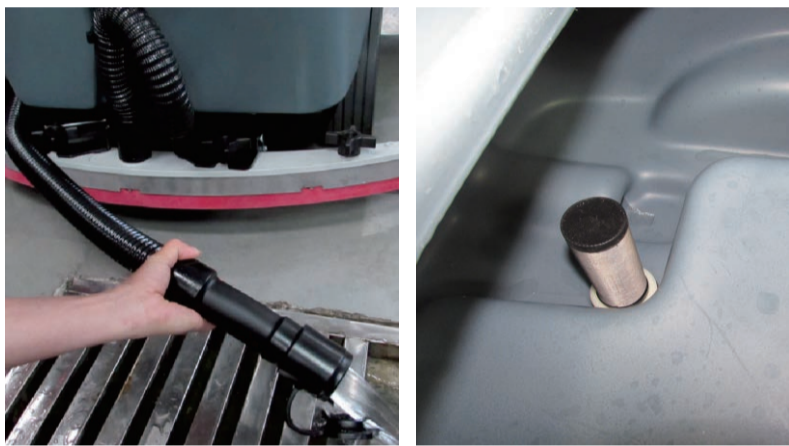
Lift Brush and Squeegee
(Store it in up Position)

2



Drain and Clean Recovery Tank

3



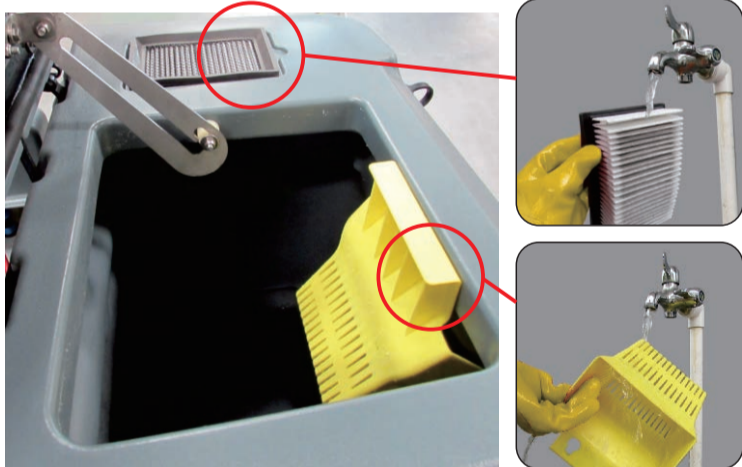
Drain and Clean the Solution Tank, Inspect
and Clean the inline Filter Screen Monthly

4



Clean Detergent Bottle and Tubing

5



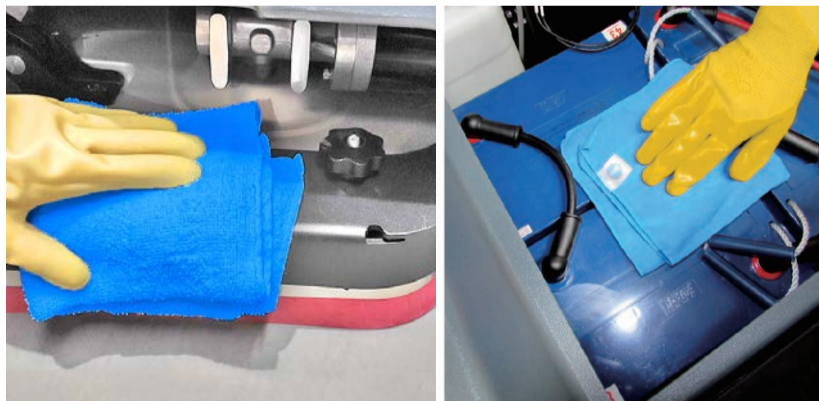
Clean Dust Basket, Filter and Let Them Air Dry

6



Clean Squeegee Blade

7



Clean Brush Deck and Top of Batteries. Make
Sure the Battery Connections are Tight and Clean

8



Lift the Chair Seat before Charging Batteries



RS26+ / RS32+ / RS32L+ / RS26L+

Important:

Before doing any maintenance on the scrubber, be sure the power is turned OFF or the batteries are disconnected.

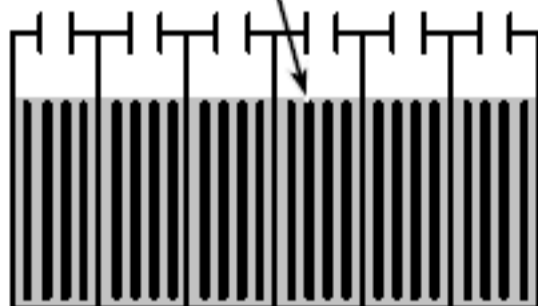
Fill solution tank with water (not to exceed 60 /140 .Pour a recommended cleaning detergent into the solution tank according to mixing instructions on the container)

Wet Flooded Battery

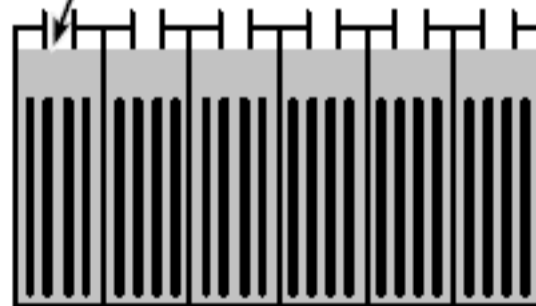


Follow the battery manual for the wet batteries maintenance, Keep Battery Compartment Open When Charging.Clean and Check the Connection tight of Battery Terminal.

Before Charging



After Charging



Check battery fluid level frequently to prevent battery damage. Add distilled water if low. DO NOT OVERFILL, the fluid may expand and overflow when charging.



When cleaning batteries, wear protective gloves and eye protection. Avoid contact with battery acid.Fire Or Explosion Hazard. Batteries Emit Hydrogen Gas. Keep Sparks and Open Flame A way.

