



i28BTL+



Traction Drive Auto Scrubber

The i28BTL+ is designed to work well in large facilities with a few tight spots due to the 28 inch cleaning width. You'll have spotless floors even in the smallest spaces. Ideal for use across industries, lithium-ion batteries provide hours of uninterrupted run time.

Our state-of-the-art fleet management software, i-Synergy, gives you real time-access to valuable data including location, operating times, charging times, and confirmed clean—all through user-friendly reports that can be downloaded and emailed to others.

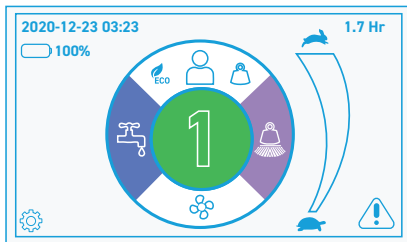
The i28BTL+ is powered by a **lithium-ion battery that is guaranteed for the life of the machine.** Up to 4 hours of uninterrupted run time, is easy to maneuver, and designed with easy to read icons on the control panel—making it a great addition across all industries, but particularly healthcare and education.

i28BTL+

Benefits

- Reduce machine downtime with active maintenance from our dedicated team of technicians
- Monitor your machine locations and performance through i-Synergy Fleet Management
- Increase efficiency and performance through easy to read cleaning reports
- Confirm clean with interested stakeholders through downloadable cleaning reports
- Improve cleanliness with our oversized 26 gallon solutions tank
- Ensure staff and building occupant safety with our lithium-ion batteries
- Save time and money training staff with all-inclusive training and user friendly equipment
- **Lithium-Ion battery is guaranteed for the life of the machine.**

Touchscreen Interface



- Setting
- Heavy Load
- 1.7 Hr Timer
- Custom Pattern
- Fault Indicator
- Power Saving
- Vacuum Motor Switch
- Solution Flow Control



Technical Specifications

Model Type	USA	I28BTL+ I-SYN
Voltage	VOLT	24
Cleaning Path	INCH	28
Traction Drive System	TRACTION	FORWARD/BACKWARD
Number of Brushes	PCS	2
Brush Rotation Speed	RPM	210
Brush Motor	V/WATT	24/2x550
Brush Pressure	LB	39-80-119
Squeegee	INCH	46.5
Solution Tank	GALLON	26
Recovery Tank	GALLON	31
Batteries	V/AH	24/225
Type Batteries	STANDARD	LI-ION
Sound Level	DBA	68
Weight without batteries	LB	352
Weight with batteries	LB	660
Run Time per charge	HOURL	3.5 - 4
Cleaning Productivity	FT ² /HR	35,871
Sizes	LXWXH INCH	62x47x45
Gradeability	%	11