



RS28L+CY

Cylindrical Ride On Scrubber



The RS28L+CY is 28" cylindrical rider scrubber designed for large floor surface areas, is fully automated with a one button programmable switch for training-free operation, and a three-setting pad pressure of up to 100 lbs. for maximum cleaning efficiency. With its pre-sweeping action, you'll have spotless floors. Ideal for use on concrete, grouted, or uneven floors.

Our state-of-the-art fleet management software, i-Synergy, gives you real time-access to valuable data including location, operating times, charging times, and confirmed clean—all through user-friendly reports that can be downloaded and emailed to others.

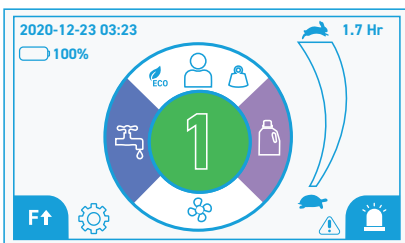
The RS28L+CY is powered by a lithium-ion battery that is guaranteed for the life of the machine. Up to 4 hours of uninterrupted run time, is easy to maneuver, and designed with easy to read icons on the control panel—making it a great addition across all industries including healthcare, education, and industrial.

RS28L+CY

Benefits

- Reduce machine downtime with active maintenance from our dedicated team of technicians
- Monitor your machine locations and performance through i-Synergy Fleet Management
- Increase efficiency and performance through easy to read cleaning reports
- Confirm clean with interested stakeholders through downloadable cleaning reports
- Improve cleanliness with our oversized 29 gallon solutions tank
- Cylindrical brushes provide pre-sweeping for improved productivity
- Ensure staff and building occupant safety with our lithium-ion batteries
- Save time and money training staff with all-inclusive training and user friendly equipment
- **Lithium-Ion battery is guaranteed for the life of the machine**

Touchscreen Interface



- | | |
|---------------------|-----------------------|
| Modes | Current Mode |
| 1.7 Hr Timer | Detergent |
| Fault Indicator | Pressure |
| Forward/Reverse | Lights On/Off |
| Setting | Solution Flow Control |
| Vacuum Motor Switch | |



Technical Specifications

Model Type	USA	RS28L+CY
Voltage	VOLT	24
Cleaning Path	INCH	28
Traction Drive System	TRACTION	FORWARD/BACKWARD
Number of Brushes	PCS	2
Brush Rotation Speed	RPM	750
Brush Motor	V/WATT	2x 560
Brush Pressure	LB	0-110
Drivemotor	V/WATT	24 V/850 W
Squeegee	INCH	42
Solution Tank	GALLON	29
Recovery Tank	GALLON	29
Batteries	V/AH	24 V/225 AH
Type Batteries	STANDARD	LI-ION
Sound Level	DBA	68
Weight with batteries	LB	739
Run Time per charge	HOURL	3.5-4
Cleaning Productivity	FT ² /HR	49,500
Travel Speed	MILE/HR	4
Sizes	LXWXH INCH	62x34.6x55.5
Gradeability	%	17
Chemical Dosing System	TYPE	PUMP