



RS26+

Rider On Scrubber

The RS26+ is 26" rider scrubber designed for large floor surface areas, is fully automated with a one button programmable switch for training-free operation, and a three-setting pad pressure of up to 165 lbs. for maximum cleaning efficiency.

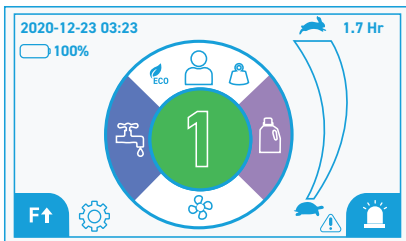
Downtime is wasted time. Money spent on replacement parts takes away from your bottom line. At ICE USA, we understand that you use our machines as hard as possible to do your job, and we recognize that sometimes maintenance is a necessity. That's why our auto scrubbers come with a 5 year warranty. We have faith that we provide the best equipment possible, but if anything happens— we're here for you.

RS26+

Benefits

- One button programmable switch for training-free operation
- On-board digital solution mixing system improves working efficiency
- Touch panel control system is state-of-the-art and user friendly
- Heavy-duty construction for maximum durability
- No tools needed for changing parabolic squeegee blades
- Variable pad pressure up to 165 lbs
- Gimbal-mounted pad drivers for easy pad loading/unloading and better scrubbing performance
- Automatic braking and parking
- Emergency shutdown system and safety lighting
- Compact design enables cleaning of narrow aisles and tight areas with maximum maneuverability

Touchscreen Interface



- | | |
|---------------------|-----------------------|
| Modes | Current Mode |
| 1.7 Hr | Detergent |
| Fault Indicator | Pressure |
| Forward/Reverse | Lights On/Off |
| Setting | Solution Flow Control |
| Vacuum Motor Switch | |



Technical Specifications

Model Type	USA	RS26+
System Voltage, DC	VOLT	24
Cleaning Path	INCH	26
Traction Drive System	TRACTION	FORWARD/BACKWARD
Pad Size (2)	INCH	13
Pad Drivers, Gimbal mount (2)	INCH	12
Pad Pressure, Variable	LB	77/121/165
Squeegee	INCH	34
Drive System	HP	1.14
Brush Motor	RPM	210
Vacuum Motor, Waterlift	HP	77/121/165
Solution Tank	GALLON	29
Recovery Tank	GALLON	29
Standard Batteries (4)	V/AH	6V, 305 AH LEAD ACID
Operational Batteries (4)	STANDARD	AGM
Charger, On-board	AMP	25
Sound Level	DBA	68
Weight without batteries	LB	617
Weight with batteries	LB	881
Run Time per charge	HOUR	3.5-4
Speed Control, (Variable up to)	MPH	4
Cleaning Productivity	FT ² /HR	46,285
Grade Level	%	7 - SCRUBBING 17.5 - TRANSPORT (EMPTY)
Sizes	LXWXH INCH	62x34.5x55.5