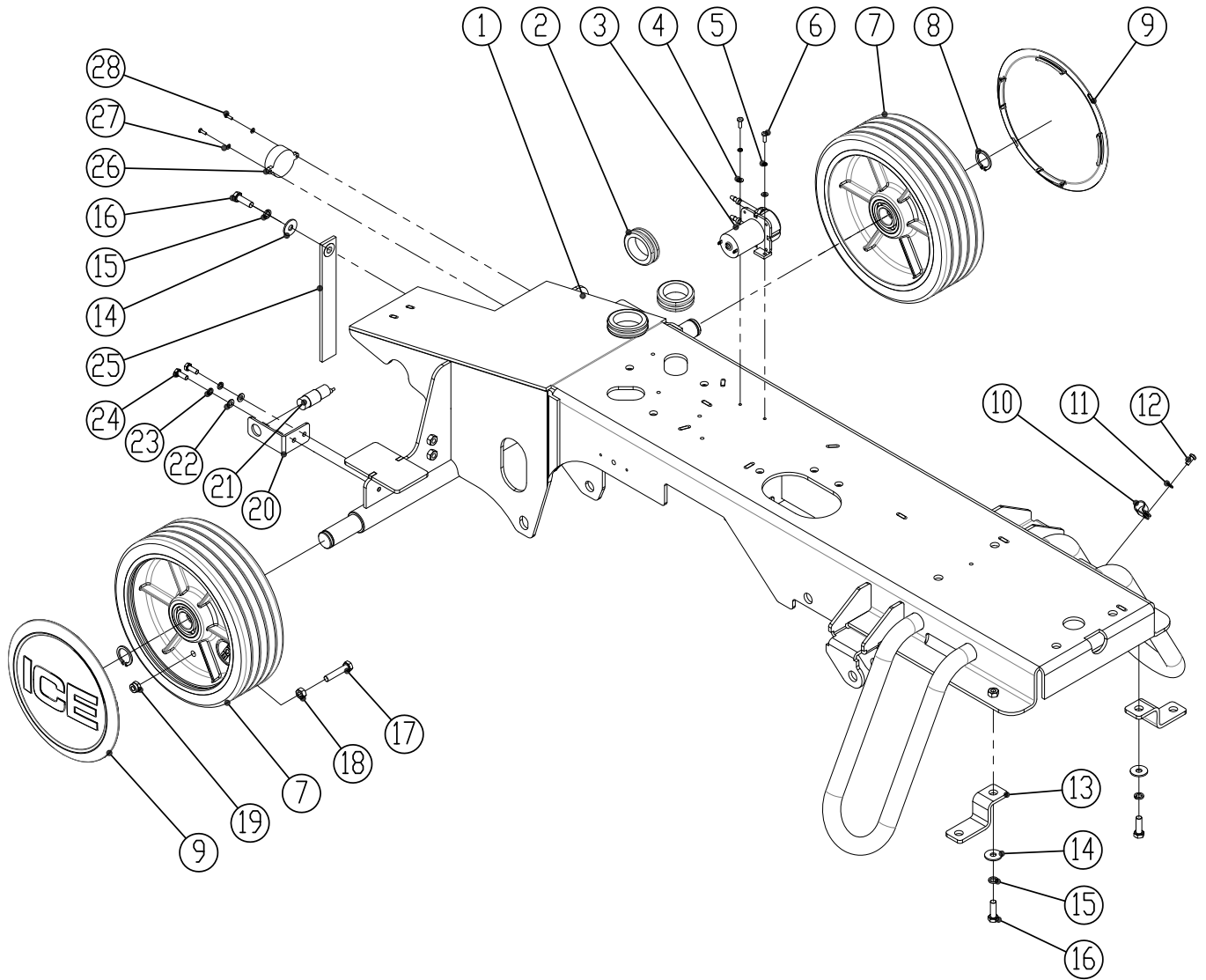

TABLE OF CONTENTS

1.MAIN FRAME GROUP	2
2.STEERING & DRIVE WHEEL GROUP	4
(1) #16 8310645 BRACKET, FLANGE BEARING{RS32L:100221~,RS26L:100110~}	5
3.SOLUTION TANK GROUP	6
4.RECOVERY TANK GROUP	8
5.RECOVERY TANK COVER GROUP	10
6.CONTROL PANEL GROUP	12
7.SEAT & DETERGENT SYSTEM GROUP	16
8.MAIN CONTROLLER GROUP	14
(1) #34 8311722 QQE CHARGER REPAIR KIT{RS32L:0~100221,RS26L:0~100110}	15
9.BATTERY GROUP	18
10.SCRUB HEAD LIFTING GROUP	20
11.SCRUB HEAD GROUP	22
12.SQUEEGEE GROUP	24
(1) #2 8310502A LINEAR, ACTUATOR, KIT {RS32L:0~100220,RS26L:0~100109}	25
(2) #2 8310590A LINEAR, ACTUATOR, KIT {RS32L:100221~RS26L:100110~}	25
13.SOLUTION & DETERGENT SYSTEM	26

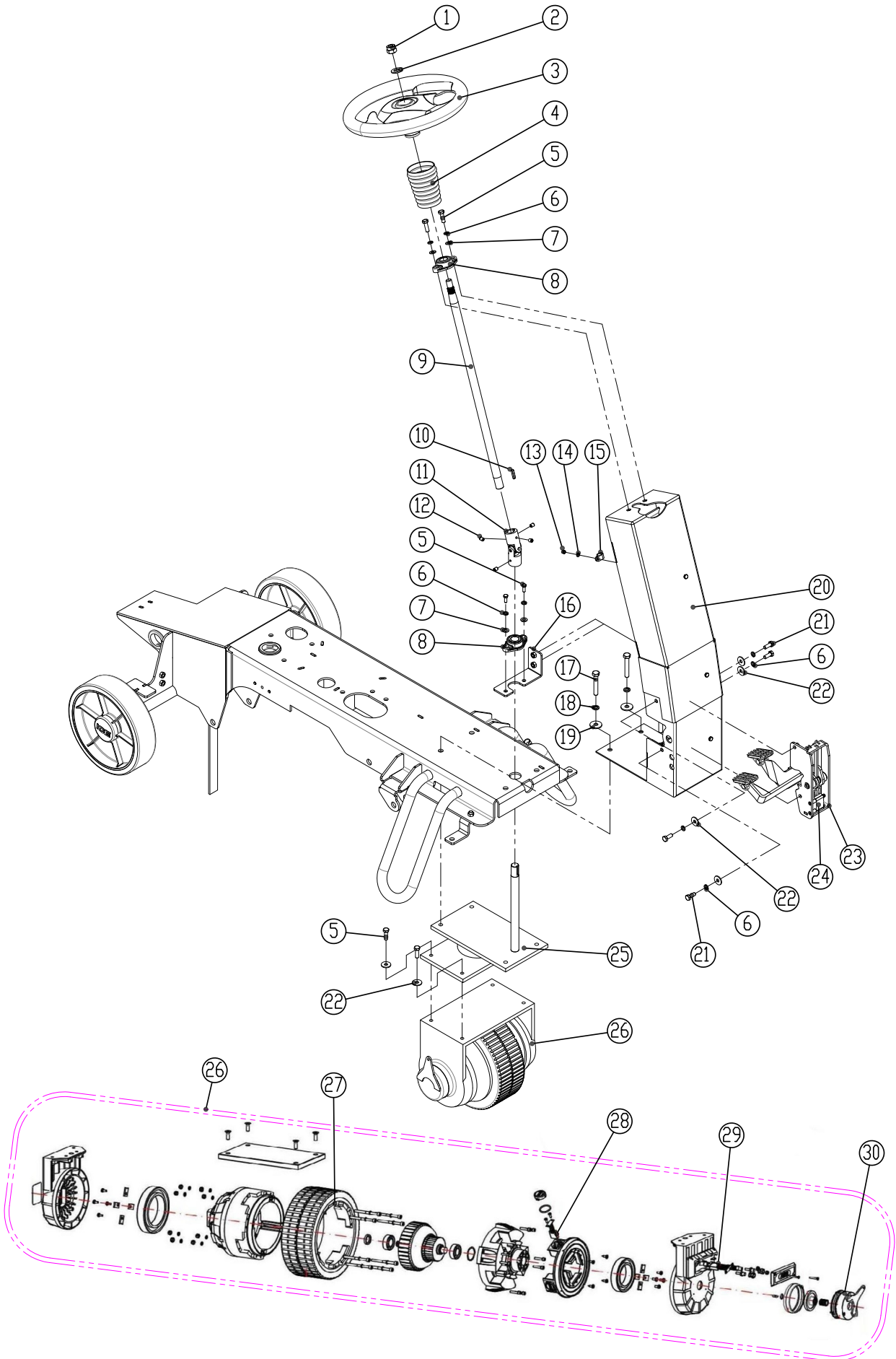
MAIN FRAME GROUP



MAIN FRAME GROUP

DIA NO.	PART NUMBER	DESCRIPTION	SERIAL NUMBER	MACHINE TYPE	NO REQ'D
1	8310102	MAIN FRAME, WELDED			1
2	8310133	RUBBER GROMMET			5
3	8310930A	PERISTALTIC PUMP, KIT			1
	8310931	TUBING, PUMP			1
4	1421409	FLAT WASHER, M4× ϕ 9×0.8			2
5	1422411	LOCK WASHER M4			2
6	1221412	SCREW, PAN HEAD, M4×12			2
7	8310119	10" WHEEL, PU TIRE			2
	1612605	BALL BEARING,6205-2RS			4
8	1436025	RETAINING RING, 25MM			2
9	8310150	WHEEL CAP			2
10	6210131	NYLON, CLAMP			5
11	1421510	FLAT WASHER, M5× ϕ 10×1.0			5
12	1221512	SCREW, PAN HEAD, M5×12			5
13	8310120	BRACKET, STAND			2
14	1421824	FLAT WASHER, M8× ϕ 24×2.0			3
15	1422821	LOCK WASHER M8			3
16	1021825	BOLT, HEX, M8×25			3
17	1021840	BOLT, HEX, M8×40			1
18	1121807	HEX NUT, M8			1
19	1123810	LOCK NUT M8			1
20	8310158	BRACKET,PROXIMITY SENSOR			1
21	8134709A	PROXIMITY SENSOR, KIT			1
22	1421612	FLAT WASHER, M6× ϕ 12×1.6			2
23	1422616	LOCK WASHER M6			2
24	1021616	BOLT, HEX, M6×16			2
25	8210118	STATIC STRAP			1
26	8310708A	HORN, 24VDC, KIT			1
27	1421307	PLAT WASHER, M3× ϕ 7×0.5			4
28	1211316	SCREW, PAN HEAD, M3×16			2

STEERING & DRIVE WHEEL GROUP

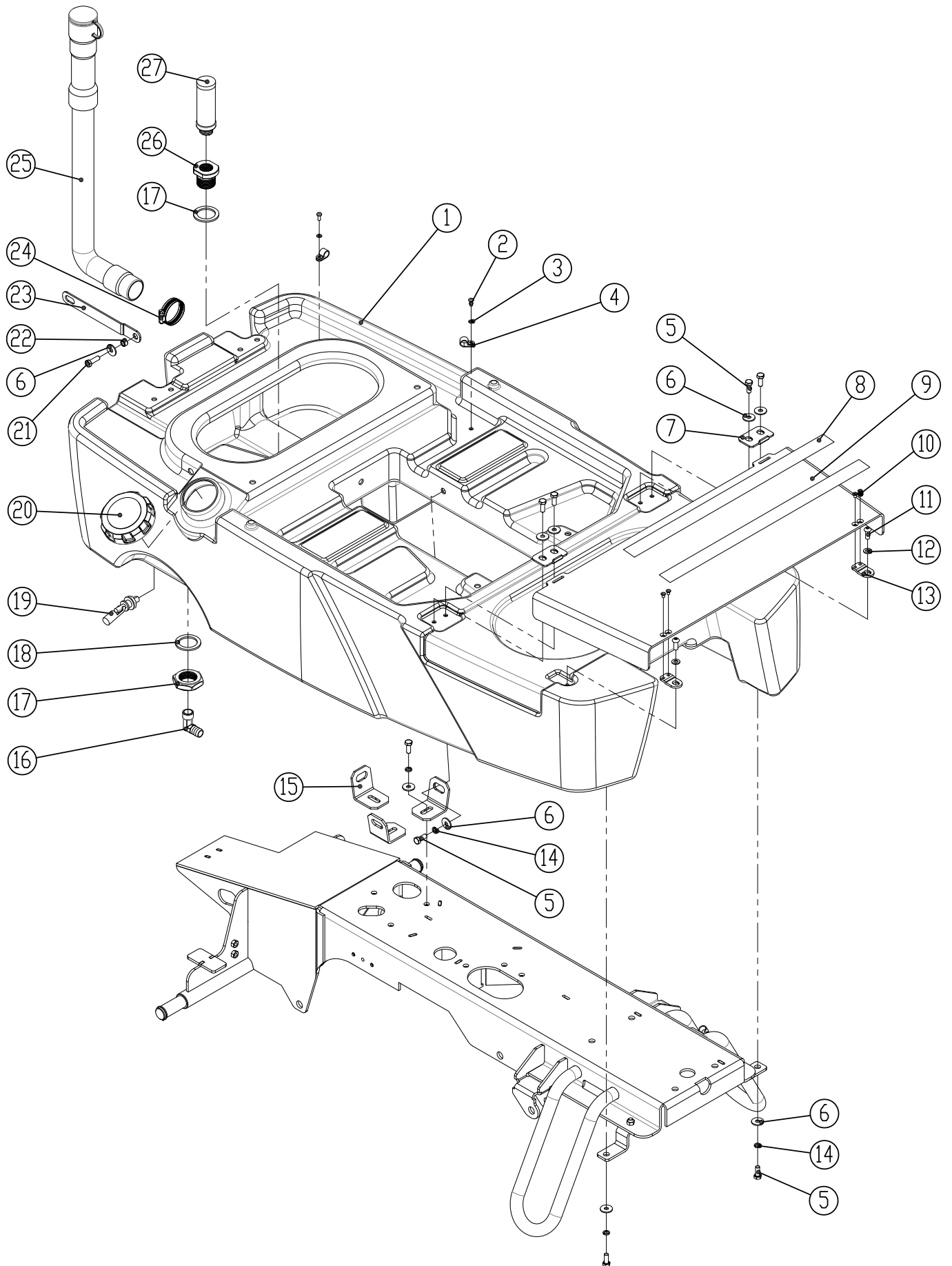


STEERING & DRIVE WHEEL GROUP

DIA NO.	PART NUMBER	DESCRIPTION	SERIAL NUMBER	MACHINE TYPE	NO REQ'D
1	1113014	LOCK NUT, M14			1
2	1421428	FLAT WASHER, M14× ϕ 28×2.0			1
3	8310602	STEERING WHEEL			1
	8310699A	CUSHION WITH ICE LOGO			1
4	8310608	BELLOWS, SHAFT, STEERING			1
5	1021825	BOLT, HEX HEAD, M8×25			8
6	1422821	LOCK WASHER, M8			6
7	1421816	FLAT WASHER, M18× ϕ 16×1.6			4
8	8310609	BEARING, FLANGE			2
9	8310605	SHAFT, STEERING WHEEL			1
10	1654025	KEY, 4.75×4.75×25.4			2
11	8310604	U-JOINT			1
12	1534508	SET SCREW, M5 ×8			4
13	1123507	LOCK NUT, M5			3
14	1421510	FLAT WASHER, M5× ϕ 10×1.0			3
15	6210131	CLAMP, NYLON			3
16	8310645	BRACKET, FLANGE BEARING	100221~	RS32L	1
			100110~	RS26L	
17	1021060	BOLT, HEX HEAD, M10×60			4
18	1422026	LOCK WASHER, M10			4
19	1421030	FLAT WASHER, M10× ϕ 30×2.5			4
20	8310601	SUPPORT BRACKET, STEERING			1
21	1021820	BOLT, HEX HEAD, M8×20			4
22	1421824	FLAT WASHER, M14× ϕ 24×2.0			8
23	8310640	ACCELERATOR/ BRAKE PEDAL			1
24	8310431	HALL SENSOR WITH CABLE			1
25	8310603	STEER-CONTROL ASSY.			1
26	8310650	DRIVE WHEEL, 24VDC 800W			1
27	8310611	PU TIRE, DRIVER WHEEL			1
28	8310612	ARMATURE BRUSH			4
29	8310613	BRUSHES CONNECTION BOX			2
30	8310618A	ELECTRICALLY RELEASED BRAKE			1

NOTE: Machines before the serial number range do not need #16 8310645 BRACKET, FLANGE BEARING.

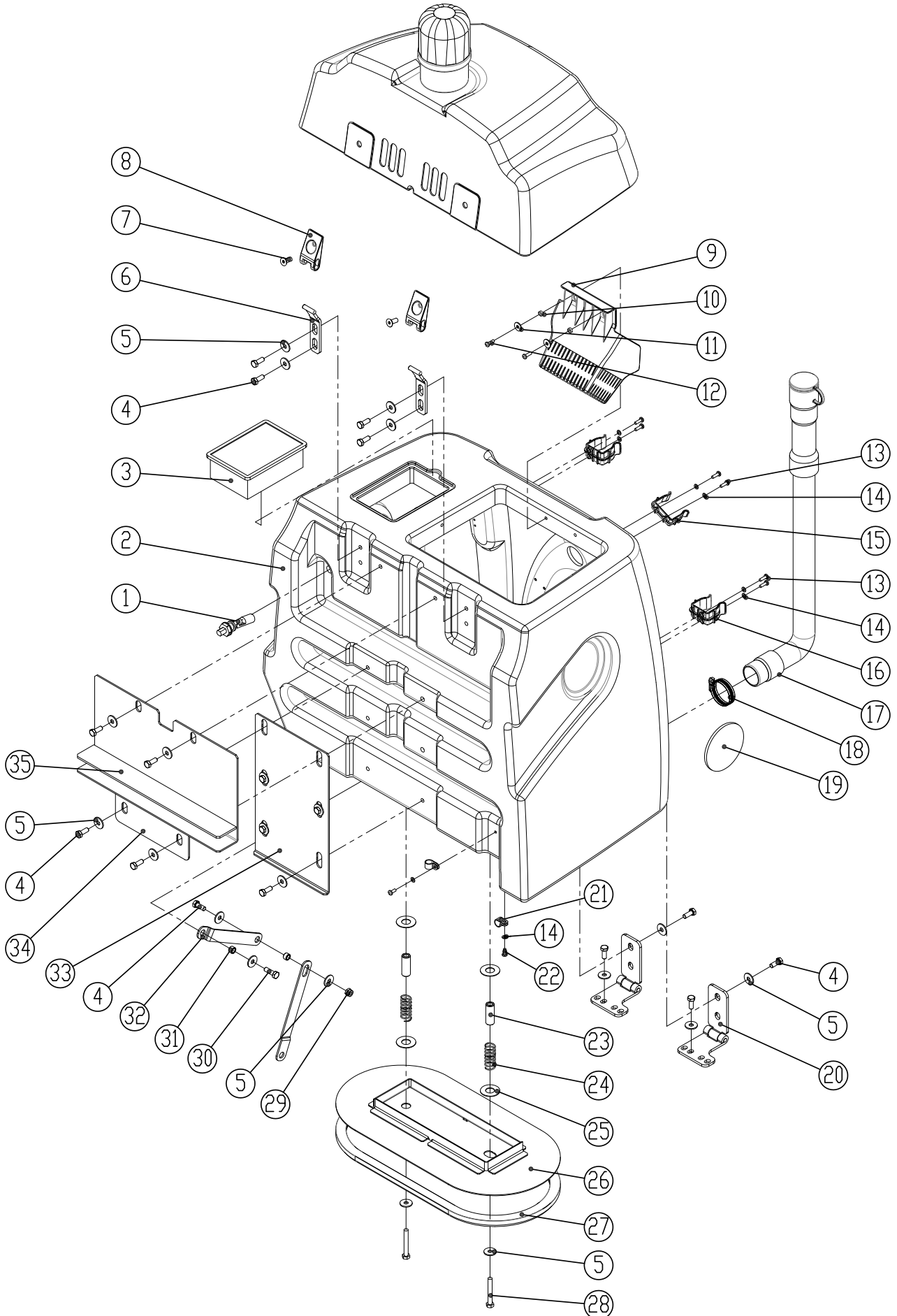
SOLUTION TANK GROUP



SOLUTION TANK GROUP

DIA NO.	PART NUMBER	DESCRIPTION	SERIAL NUMBER	MACHINE TYPE	NO REQ'D
1	8310101	SOLUTION TANK			1
2	1221512	SCREW, PAN HEAD, M5×12			2
3	1421510	FLAT WASHER, M5× ϕ 10×1.0			2
4	8113009	CLAMP, NYLON			2
5	1021820	BOLT, HEX HEAD, M8×20			12
6	1421824	FLAT WASHER, M8× ϕ 24×2.0			13
7	8310139	PLATE			2
8	8310151A	NON-SLIP MAT			2
9	8310132	FOOTREST PLATE			1
10	1222508	SCREW, M5×8			4
11	1512820	SCREW, HEX SOCKET, M8×20			2
12	1421816	FLAT WASHER, M8× ϕ 16×1.6			2
13	8310140	JUNCTION PLATE			2
14	1422821	LOCK WASHER, M8			8
15	8310130	BRACKET, SOLUTION TANK MNTG			3
16	8310124	ELBOW, G1/2			1
17	8310142	NUT, M36			1
18	8310141	SEALING			2
19	8310238A	SENSOR, SOLUTION LEVEL, KIT			1
20	8310125	CAP, SOLUTION TANK			1
21	1021825	BOLT, HEX HEAD, M8×25			1
22	8310225	SLEEVE, ϕ 8.1× ϕ 12.7×7.8			1
23	8310224	ARM, RECOVERY TANK SUPPORT			1
24	1962050	CLAMP, 2 INCH			1
25	8011030	HOSE ASSEMBLY			1
26	8310123	ADAPTER, STRAINER ASSY			1
27	8310122	STRAINER ASSY			1

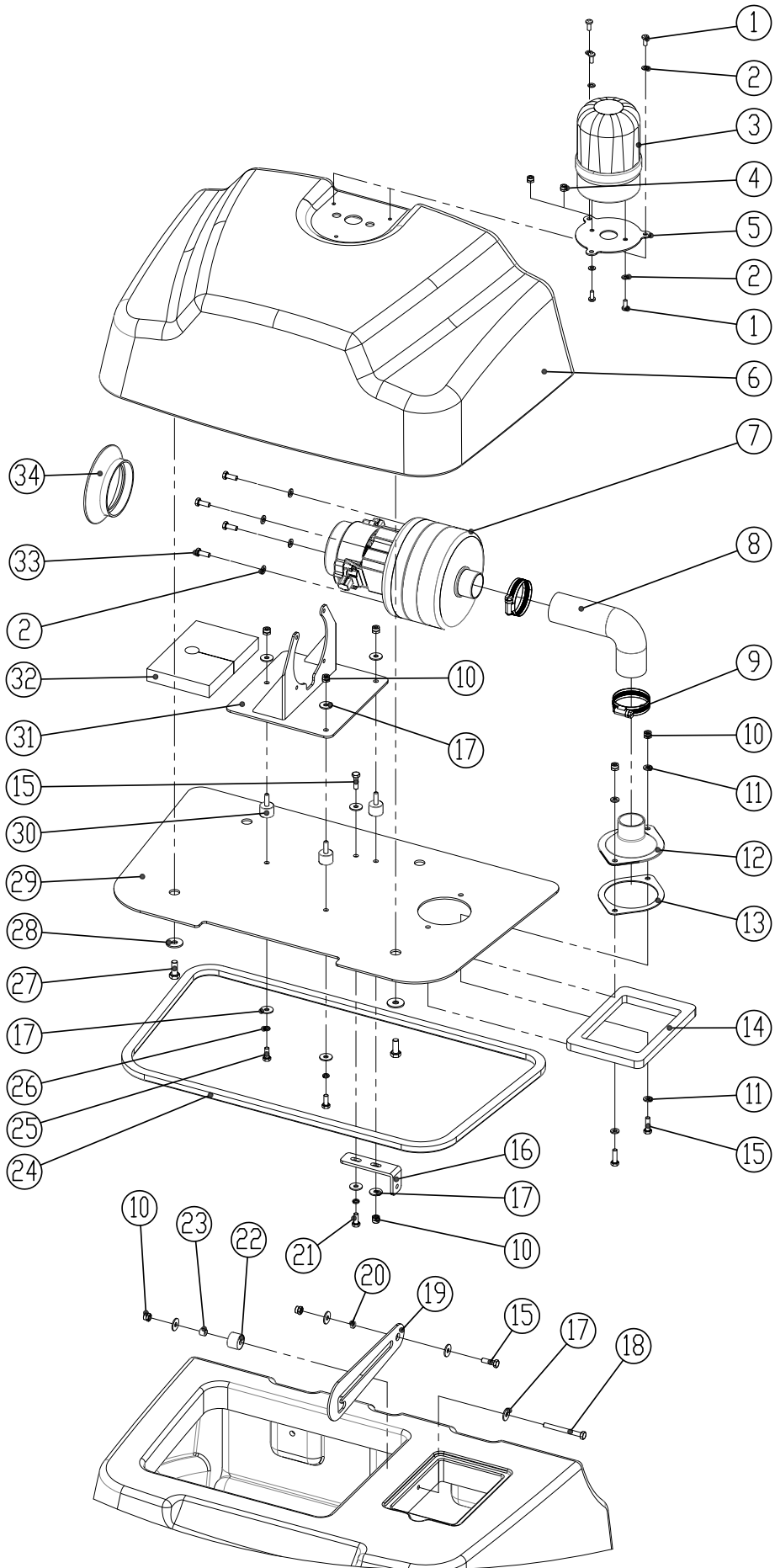
RECOVERY TANK GROUP



RECOVERY TANK GROUP

DIA NO.	PART NUMBER	DESCRIPTION	SERIAL NUMBER	MACHINE TYPE	NO REQ'D
1	8310238A	SENSOR, SOLUTION LEVEL, KIT			1
2	8310201	RECOVERY TANK			1
3	8310237	FILTER, DUST			1
4	1021820	BOLT, HEX HEAD, M8×20			21
5	1421824	FLAT WASHER, M8× ϕ 24×2.0			25
6	8310227	HINGE, WELDED			2
7	1513820	SCREW, HEX SOCKET, M8×20			2
8	8310226	HINGE, LEAF			2
9	8310250	DEBRIS COLLECTOR			1
10	8012008	BUSHING			2
11	1421618	FLAT WASHER, M6× ϕ 18×1.6			2
12	1321413	SELF-TAPPING, ST4.8 x 13			2
13	1221516	SCREW, PAN HEAD, M5×16			8
14	1421510	FLAT WASHER, M5× ϕ 10×1.0			12
15	2310129	CLAMP, HOSE			2
16	6210111	CLAMP, HOSE			2
17	8011030	DRAIN HOSE			1
18	1962050	CLAMP, 2 INCH			1
19	4010316	ICE LOGO			2
20	8310126	HINGE ASSY.			2
21	8113009	CLAMP, NYLON			4
22	1221512	SCREW, PAN HEAD, M5×12			4
23	8310221	SPACER			2
24	8310220	COMPRESSION SPRING			2
25	8310222	FLAT WASHER, LARGE			4
26	8310216	COVER, SOLUTION TANK			1
27	8310219	SEALING STRIP			1
28	1022860	BOLT, HEX HEAD, M8×60			2
29	1123810	LOCK NUT, M8			1
30	1021825	BOLT, HEX HEAD, M8×25			1
31	8310225	SLEEVE, ϕ 8.1× ϕ 12.7×7.8			2
32	8310223	ARM, RECOVERY TANK SUPPORT			1
33	8310215	BRACKET, RECOVERY TANK SUPPORT			1
34	8310211	BRACKET, SUPPORT			1
35	8310214	SPACER, RUBBER			1

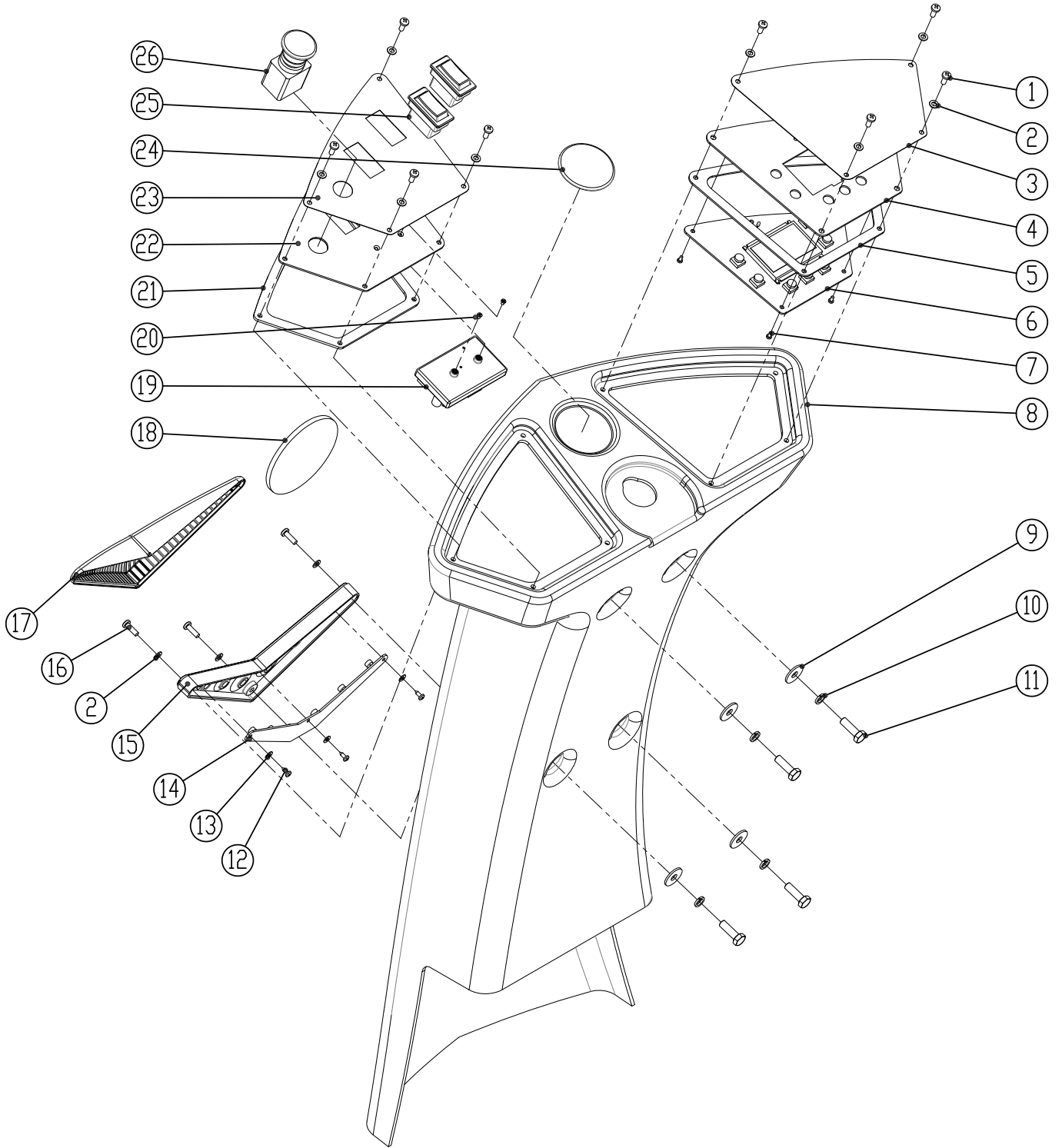
RECOVERY TANK COVER GROUP



RECOVERY TANK COVER GROUP

DIA NO.	PART NUMBER	DESCRIPTION	SERIAL NUMBER	MACHINE TYPE	NO REQ'D
1	1221512	SCREW, PAN HEAD, M5×12			5
2	1421510	FLAT WASHER, M5×φ10×1.0			9
3	8310138A	CAUTION LIGHT, KIT			1
4	1123507	LOCK NUT, M5			2
5	8310241	PLATE, CATUION LIGHT			1
6	8310202	RECOVERY TANK COVER			1
7	8310299	VACUUM MOTOR, 3 STAGE, KIT			1
	8112008	CARBON BRUSH FOR VACUUM MOTOR			2
8	8310207	VACUUM HOSE			1
9	1962050	CLAMP, 2 INCH			2
10	1123608	LOCK NUT, M6			8
11	1421612	FLAT WASHER, M6×φ12×1.6			4
12	8310204	ADAPTER, VACUUM HOSE			1
13	8310205	GASKET, ADAPTER			1
14	8310230	GASKET, DUST FILTER			1
15	1021620	BOLT, HEX HEAD, M6×20			4
16	8310232	BRACKET			1
17	1421618	FLAT WASHER, M6×φ18×1.6			12
18	1022600	BOLT, HEX HEAD, M6×100			1
19	8310228	SUPPORT, RECOVERY TANK COVER			1
20	8310231	SLEEVE, φ6.4×φ9.5×4			1
21	1021616	BOLT, HEX HEAD, M6×16			1
22	8310236	SPACER, NYLON			1
23	8310235	SLEEVE, φ6.4×φ9.5×8			1
24	8310229	SEALING STRIP			1
25	1021610	BOLT, HEX HEAD, M6×10			2
26	1422616	LOCK WASHER, M6			3
27	1021820	BOLT, HEX HEAD, M8×20			4
28	1421824	FLAT WASHER, M8×φ24×2.0			4
29	8310203	PLATE, VACCUM MOTOR MNTG			1
30	8310208	ISOLATER, M6			3
31	8310209	BRACKET, VACCUM MOTOR			1
32	8310234	INSULATION			1
33	1311316	SCREW, SELF-TAPPING, ST4.8×16			4
34	8310206	SEAL, FAN			1

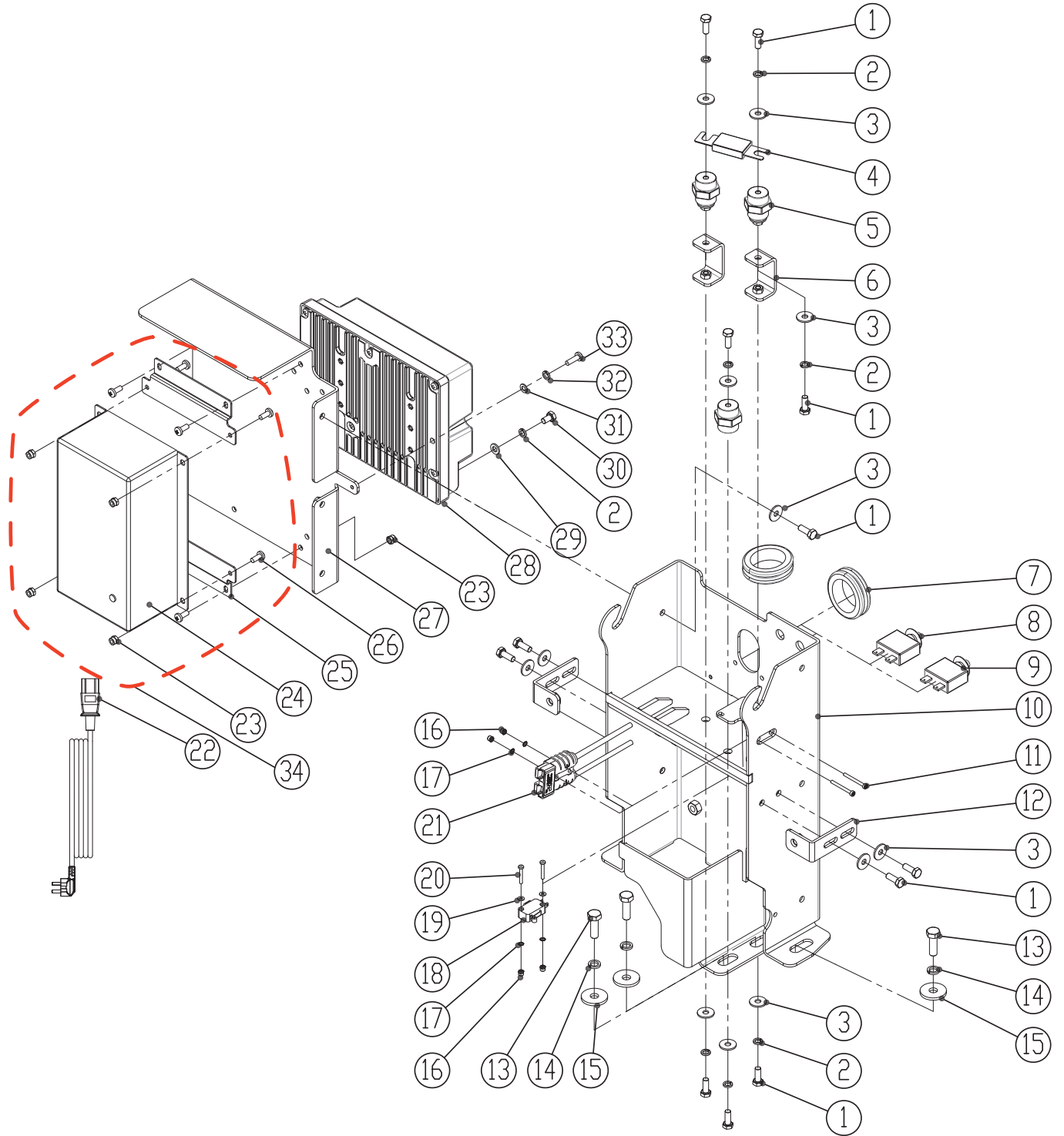
CONTROL PANEL GROUP



CONTROL PANEL GROUP

DIA NO.	PART NUMBER	DESCRIPTION	SERIAL NUMBER	MACHINE TYPE	NO REQ'D
1	1221512	SCREW, PAN HEAD, M5×12			8
2	1421510	FLAT WASHER, M5× ϕ 10×1.0			11
3	8311703	DECAL, CONTROL PANEL			1
4	8311702	PLATE, CONTROL PANEL			1
5	8310712	GASKET, CONTROL PANEL			1
6	8310776	PCB, CONTROL PANEL (LI / EN)			1
7	1221306	SCREW, PAN HEAD, M3×6			5
8	8310701	CONROL HOUSING			1
9	1421824	FLAT WASHER, M8× ϕ 24×2.0			4
10	1422821	LOCK WASHER, M8			4
11	1021825	BOLT, HEX HEAD, M8×25			4
12	1321110	SCREW, SELF-TAPPING, ST3.5×10			3
13	1421409	FLAT WASHER, M4× ϕ 9×0.8			3
14	8133610	LED LIGHT, KIT			1
15	8133601	BASE, LED LIGHT			1
16	1221520	SCREW, PAN HEAD, M5×20			3
17	8133602	COVER, LED LIGHT			1
18	4010316	ICE LOGO			1
19	8134768	RFID BOARD			1
20	1222305	SUNK SCREW, M3×5			2
21	8310755	GASKET, SWITCH PANEL			1
22	8311751	PLATE, SWITCH PANEL			1
23	8311752	DECAL, SWITCH PANEL, RS32L			1
	8311754	DECAL, SWITCH PANEL, RS26L			1
24	2010121	ICE LOGO, SMALL			1
25	8310709	ROCKER SWITCH			2
26	8310707	EMERGENCY STOP SWITCH			1

MAIN CONTROLLER GROUP

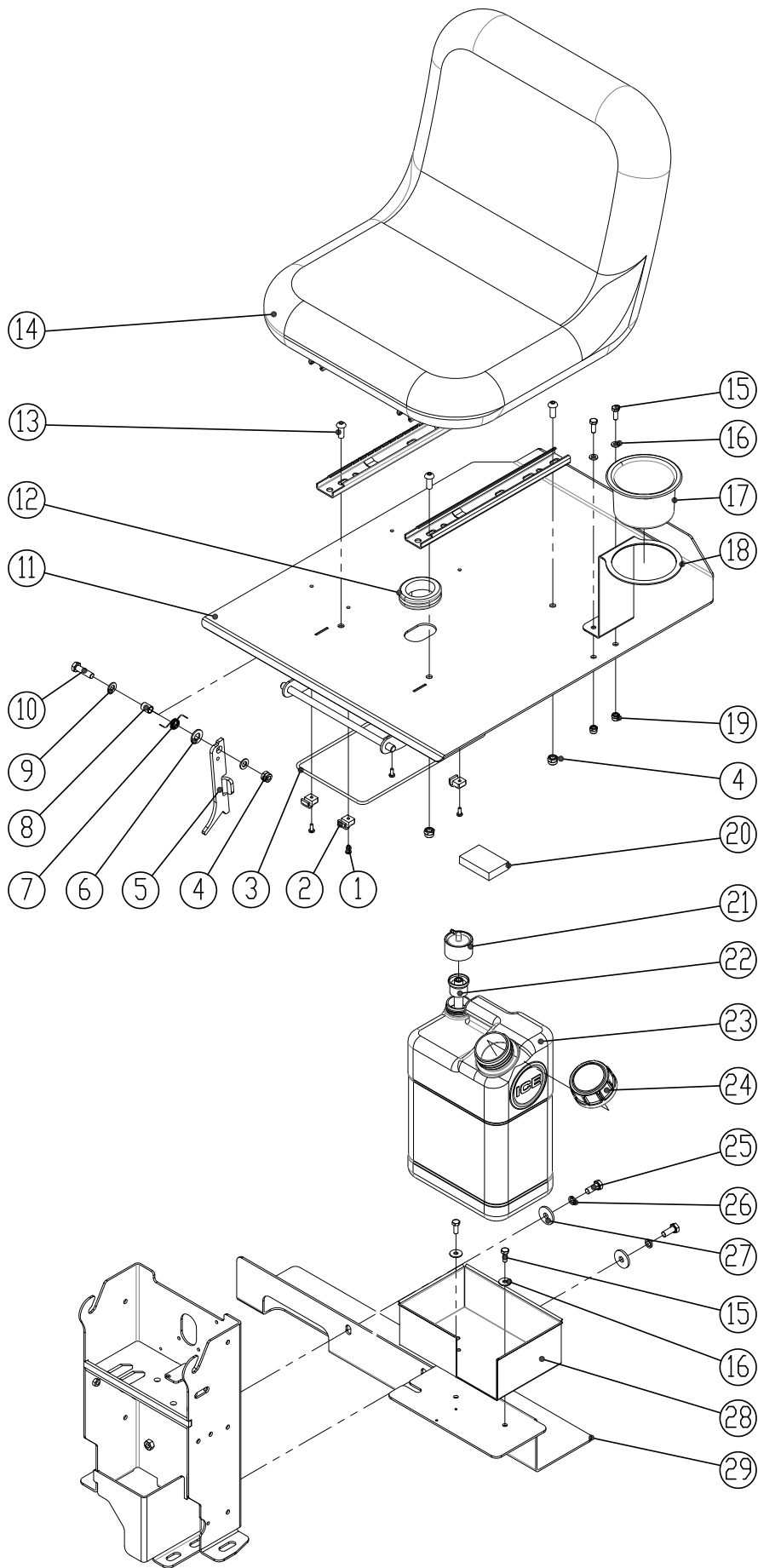


CONTROLLER GROUP

DIA NO.	PART NUMBER	DESCRIPTION	SERIAL NUMBER	MACHINE TYPE	NO REQ'D
1	1021616	SCREW, HEX HEAD, M6×16			12
2	1422616	LOCK WASHER, M6			18
3	1421618	FLAT WASHER, M6×φ18×1.6			15
4	8310480	FUSE, 150A			1
5	8114705	INSULATOR			3
6	8310422	BRACKET, INSULATOR			2
7	8310133	RUBBER GROMMET			2
8	8310740	CIRCUIT BREAKER, 5A			1
9	8014068	CIRCUIT BREAKER, 10A			1
10	8310450	BRACKET, SCRUB HEAD LIFTING			1
11	1211330	SCREW, PAN HEAD, M3×30			2
12	8310425	BRACKET			2
13	1021825	BOLT, HEX HEAD, M8×25			5
14	1422821	LOCK WASHER, M8			5
15	1421828	FLAT WASHER, M8×φ28×2.5			5
16	1123305	LOCK NUT, M3			4
17	1434300	WASHER, TOOTH, M3			4
18	8310423	MICRO SWITCH			1
19	1421307	FLAT WASHER, M3×φ7×0.5			2
20	1211320	SCREW, PAN HEAD, M3×20			2
21	8311743	OFF BOARD CHARGER SOCKET			1
22	8112030	POWER CORD, BATTERY CHARGER, US			1
	8112040	POWER CORD, BATTERY CHARGER, EU			1
	8112050	POWER CORD, BATTERY CHARGER, JP			1
	8112060	POWER CORD, BATTERY CHARGER, CH			1
	8112070	POWER CORD, BATTERY CHARGER, UK			1
23	1123507	LOCK NUT, M5			8
24	8311720	QQE CHARGER, 30A			1
25	8311721	BRACKET, BATTERY CHARGER			2
26	1221512	SCREW, HEX HEAD, M5×12			8
27	8310452	BRACKET, BATTERY CHARGER			1
28	8310790	MAIN CONTROLLER			1
29	1423612	FLAT WASHER M6× φ 12×1, COPPER			10
30	1023612	HEX BOLT M6 X 12, COPPER			10
31	1421510	FLAT WASHER, M5×φ10×1.0			2
32	1422513	LOCK WASHER, M5			2
33	1221525	SCREW, HEX HEAD, M5×25			2
34	8311722	QQE CHARGER REPAIR KIT	0~100221	RS32L	1
			0~100110	RS26L	

NOTE: #34 8311722 QQE CHARGER REPAIR KIT includes chargers, adapter plates, screws and nuts. Only machines within the above serial number range are required to purchase the kit, and machines outside the range can purchase #24 8311720 QQE CHARGER, 30A separately.

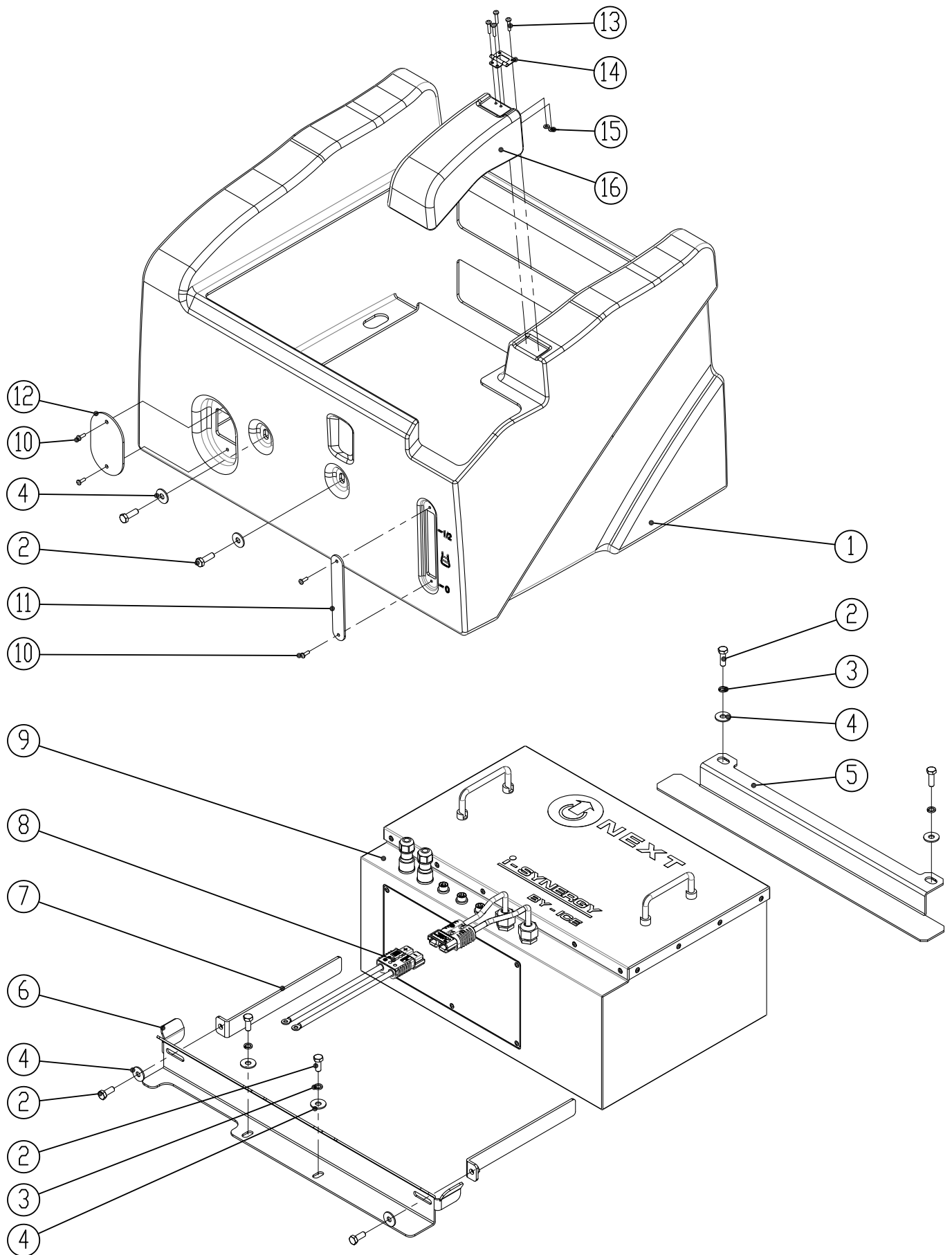
SEAT & DETERGENT SYSTEM GROUP



SEAT & DETERGENT SYSTEM GROUP

DIA NO.	PART NUMBER	DESCRIPTION	SERIAL NUMBER	MACHINE TYPE	NO REQ'D
1	1221412	SCREW, HEX HEAD, M4×12			4
2	8133502	CLAMP			4
3	8133501	CARGO NET			1
4	1123810	LOCK NUT, M8			5
5	8310413	SUPPORT, SEAT			1
6	8117007	NYLON SPACER			1
7	8310415	TORSION SPRING			1
8	8310414	SLEEVE, $\phi 8.2 \times \phi 11 \times 15$			1
9	1421816	FLAT WASHER, M8× $\phi 16 \times 1.6$			2
10	1021830	BOLT, HEX HEAD, M8×30			1
11	8310411	PLATE, SEAT MNTG			1
12	8310133	RUBBER GROMMET			1
13	1512820	SCREW, HEX SOCKET, M8×20			4
14	8310402K	SEAT, KIT			1
15	1021616	SCREW, HEX HEAD, M6×16			4
16	1421618	FLAT WASHER, M6× $\phi 18 \times 1.6$			4
17	8310418	CUP HOLDER			1
18	8310419	BRACKET, CUP HOLDER			1
19	1123608	LOCK NUT, M6			2
20	8310460	SPACER			1
21	8310463	ADAPTOR, KEY			1
22	8310464	INSERT, LOCK			1
23	8310461	BOTTLE, DETERGENT			1
24	8310462	CAP, BOTTLE			1
25	1021820	BOLT, HEX HEAD, M8×20			2
26	1422821	LOCK WASHER, M8			2
27	1421828	FLAT WASHER, M8× $\phi 28 \times 2.5$			5
28	8310465	BOX, DETERGENT BOTTLE			1
29	8310421	BRACKET			1

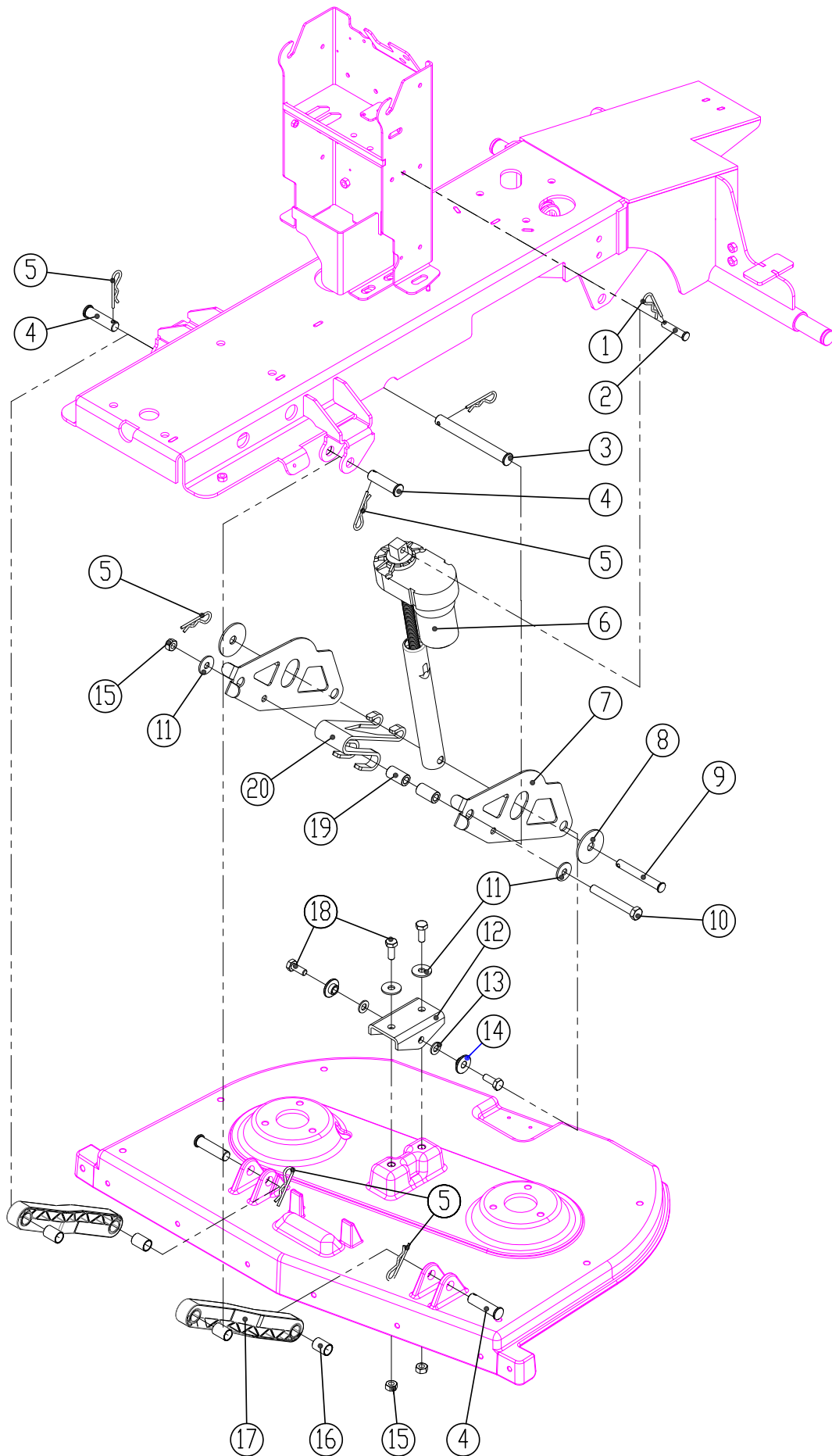
BATTERY GROUP



BATTERY GROUP

DIA NO.	PART NUMBER	DESCRIPTION	SERIAL NUMBER	MACHINE TYPE	NO REQ'D
1	8310401	BOX, BATTERY			1
2	1021820	BOLT, HEX HEAD, M8×20			8
3	1422821	LOCK WASHER, M8			4
4	1421824	FLAT WASHER, M8× ϕ 24×2.0			8
5	8310131	SUPPORT, BATTERY, REAR			1
6	8310136	SUPPORT, BATTERY, FRONT			1
7	8310407	PLATE			2
8	8311741	BATTERY CONNECT CABLE			1
9	N241760	LITHIUM-ION BATTERY, 240AH			1
10	1221412	SCREW, PAN HEAD, M4×12			4
11	8310406	COVER			1
12	8210114	COVER			1
13	1662316	RIVET, 3.2×16			4
14	8310404	HINGE ASSEMBLY			1
15	1421409	FLAT WASHER, M4× ϕ 9×0.8			4
16	8310403	COVER			1

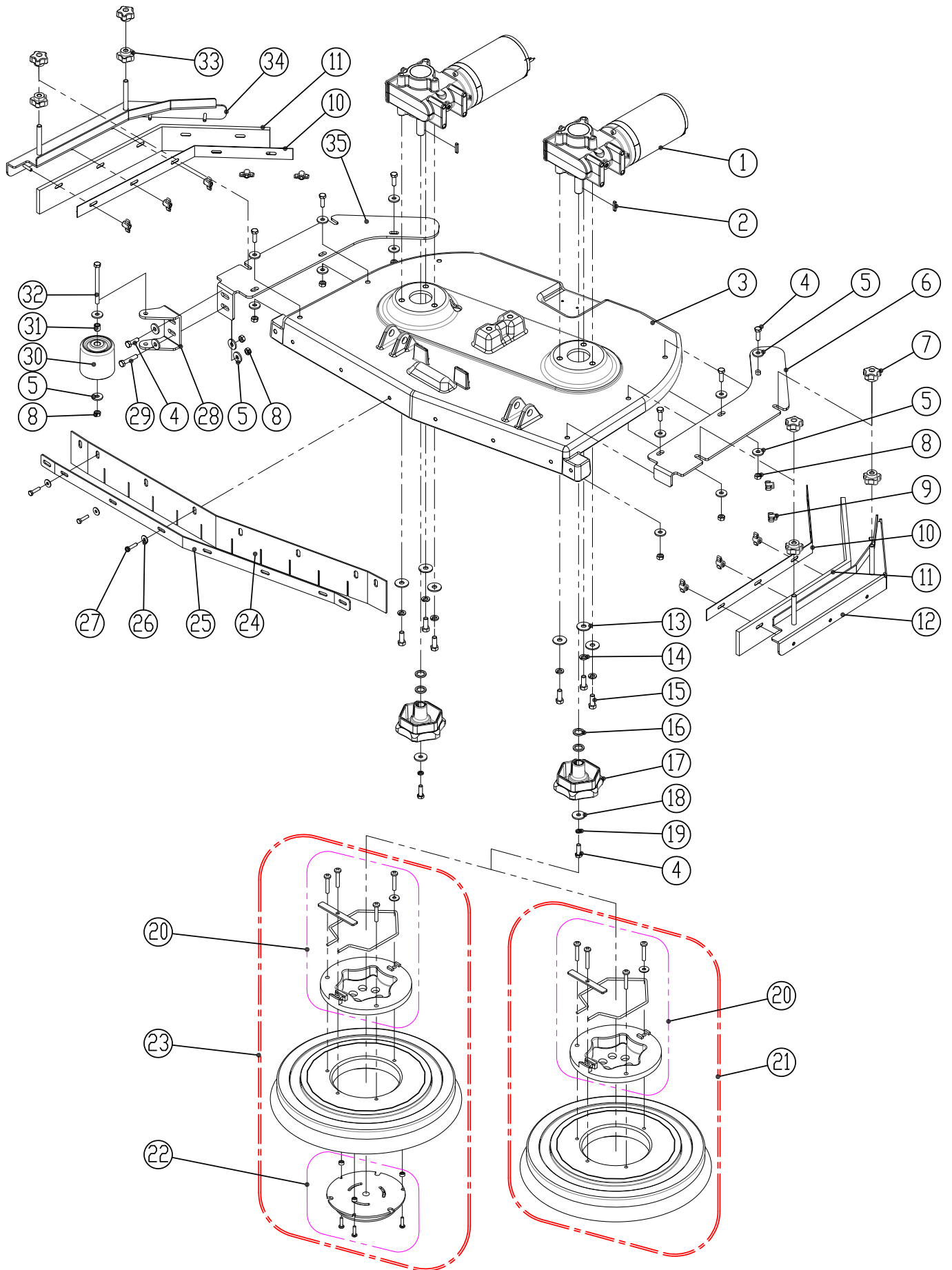
SCRUB HEAD LIFTING GROUP



SCRUB HEAD LIFTING GROUP

DIA NO.	PART NUMBER	DESCRIPTION	SERIAL NUMBER	MACHINE TYPE	NO REQ'D
1	8310320	PIN, COTTER			1
2	8210301	PIN, $\phi 9.5 \times 38$			1
3	8310311	PIN, $\phi 16 \times 150$			1
4	8310312	PIN, $\phi 16 \times 57$			4
5	8210309	PIN, COTTER			6
6	8310303A	LINEAR ACTUATOR, KIT			1
7	8310305	PLATE, ARM, SCRUB HEAD LIFTING			2
8	8310314	FLAT WASHER, LARGE			2
9	8310313	PIN, $\phi 12 \times 90$			1
10	1032090	BOLT, HEX HEAD, M10 \times 90			1
11	1421030	FLAT WASHER, M10 $\times\phi 30 \times 2.5$			4
12	8310304	BRACKET, SCRUB HEAD LIFTING			1
13	1421020	FLAT WASHER, M10 $\times\phi 20 \times 2$			2
14	8310307	BUSHING, FLANGE			2
15	1123012	LOCK NUT, M10			3
16	8310144	SLEEVE, $\phi 16 \times \phi 18.6 \times 25.4$			4
17	8310118	ARM, SCRUB HEAD LIFTING			2
18	1011025	BOLT, HEX HEAD, M10 \times 25			4
19	8310306	SLEEVE, $\phi 10.5 \times \phi 18.5 \times 34$			2
20	8310308	SPRING			1

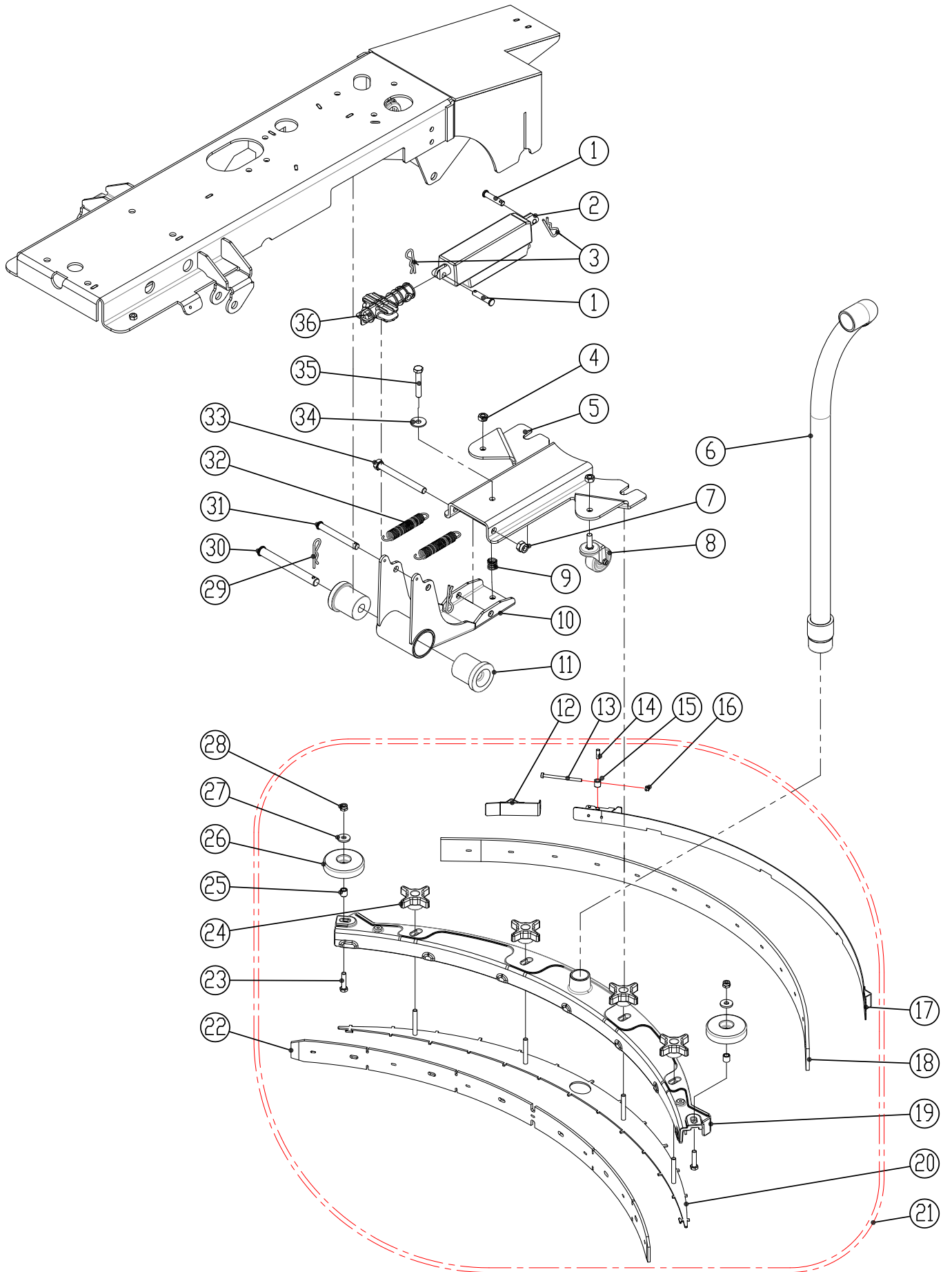
SCRUB HEAD GROUP



SCRUB HEAD GROUP

DIA NO.	PART NUMBER	DESCRIPTION	SERIAL NUMBER	MACHINE TYPE	NO REQ'D
1	8310399	BRUSH MOTOR, 24VDC 450W, KIT			2
2	1655025	KEY, 5×5×25			2
3	8311301	SCRUB HEAD HOUSING, RS26L			1
	8312301	SCRUB HEAD HOUSING, RS28L			1
	8310301	SCRUB HEAD HOUSING, RS32L			1
4	1021830	BOLT, HEX HEAD, M8×30			9
5	1421824	FLAT WASHER, M8× ϕ 24×2.0			18
6	8310356	BRACKET, LEFT			1
7	8210532	KNOB, M10			4
8	1123810	LOCK NUT, M8			9
9	8210531	KNOB, M6			10
10	8310355	CLAMP, SIDE SKIRT			2
11	8310365	BLADE, SIDE SKIRT, LINATEX			2
	8310366	BLADE, SIDE SKIRT, PU (OPTION)			2
12	8310357	BRACKET, SIDE SKIRT, LEFT			1
13	1421020	FLAT WASHER, M10× ϕ 20×2.0			6
14	1422010	LOCK NUT, 3/8			6
15	1023010	BOLT, HEX HEAD, 3/8-16×1			6
16	8210804	SPACER			4
17	8210805	HUB, BRUSH DRIVE			2
18	1421828	FLAT WASHER, M8× ϕ 28×3.0			2
19	1422821	LOCK WASHER, M8			2
20	9000004	CLUTCH, G-400S			2
21	9050013	BRUSH, 13 INCH, RS26L			2
	9050014	BRUSH, 14 INCH, RS28L			2
	9050016	BRUSH, 16 INCH, RS32L			2
22	9000003	CENTER LOCK, #3			2
23	9040013	PAD DRIVER, 13 INCH, RS26L			2
	9040014	PAD DRIVER, 14 INCH, RS28L			2
	9040016	PAD DRIVER, 16 INCH, RS32L			2
24	8311358	SKIRT, RS26L			1
	8312358	SKIRT, RS28L			1
	8310358	SKIRT, RS32L			1
25	8311359	CLAMP, SKIRT, RS26L			1
	8312359	CLAMP, SKIRT, RS28L			1
	8310359	CLAMP, SKIRT, RS32L			1
26	1421618	FLAT WASHER, M6× ϕ 18×1.6			7
27	1021616	BOLT, HEX HEAD, M6×16			7
28	8310361	BRACKET, PROTECTIVE WHEEL			1
29	1021840	BOLT, HEX HEAD, M8×40			1
30	8310362	PROTECTIVE WHEEL			1
31	8115404	SLEEVE, ϕ 8× ϕ 12.7×12.7			6
32	1022800	BOLT, HEX HEAD, M8×100			1
33	8310354	KNOB, M10			4
34	8310351	BRACKET, SIDE SKIRT, RIGHT			1
35	8310353	BRACKET, RIGHT			1

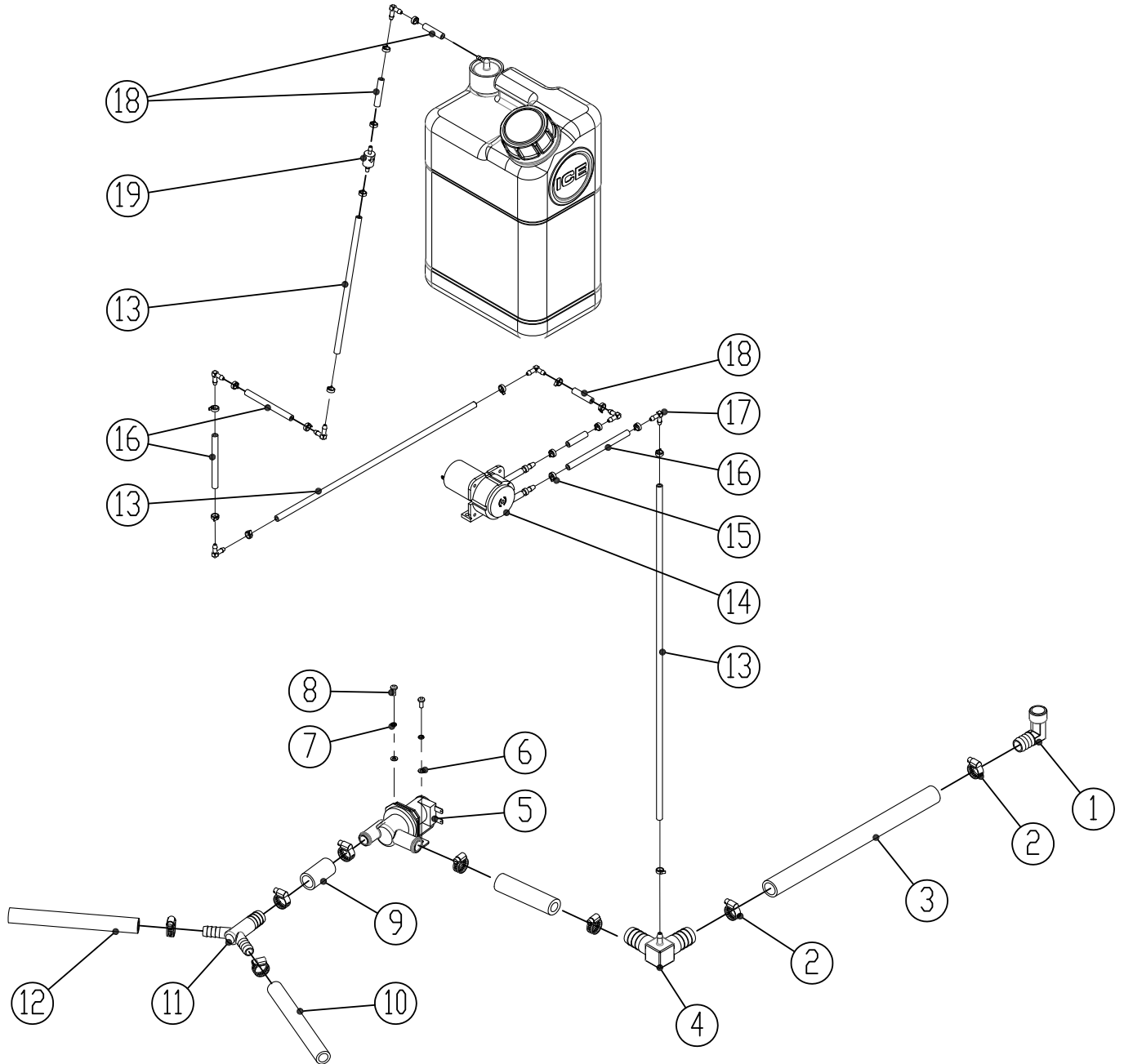
SQUEEGEE GROUP



SQUEEGEE GROUP

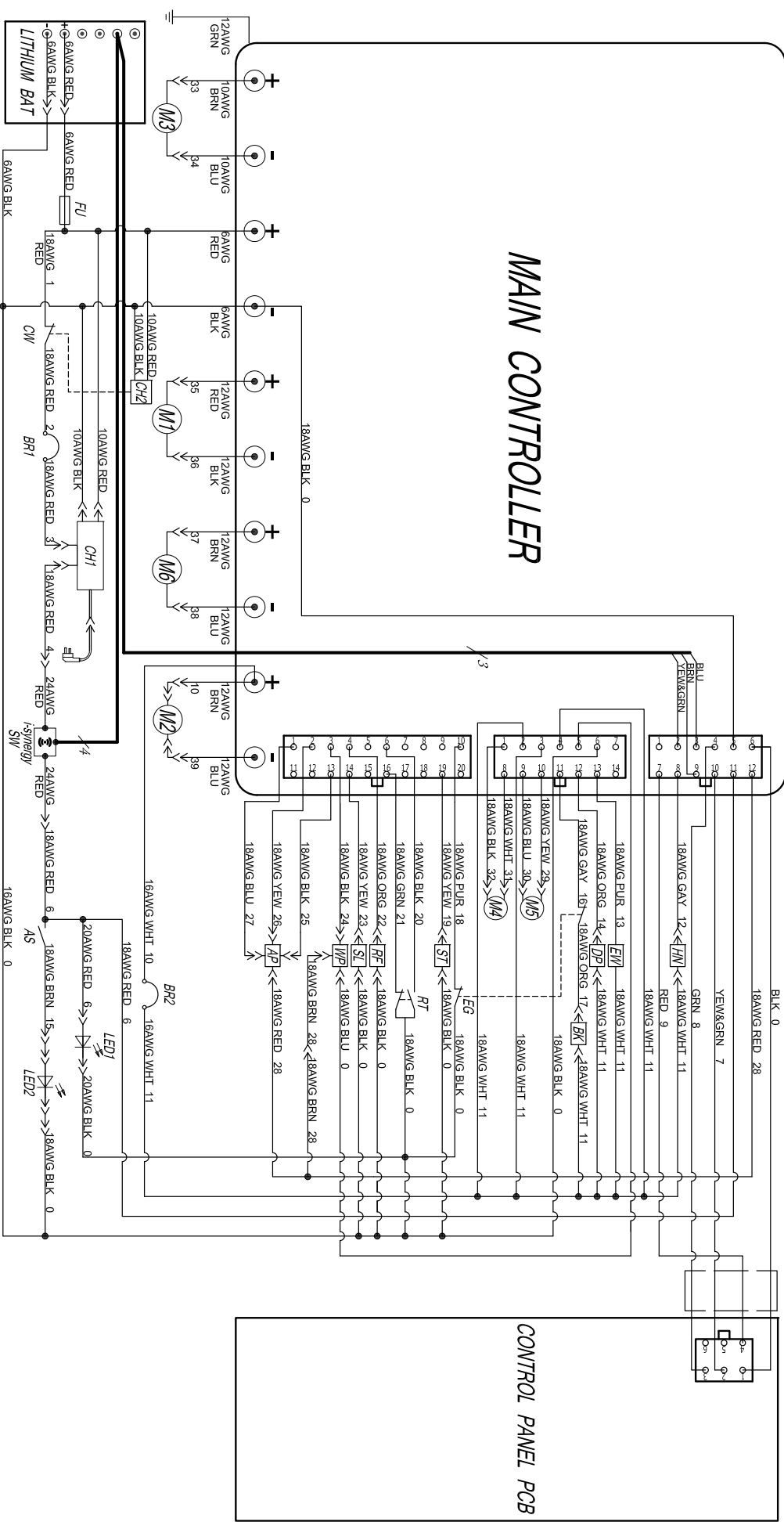
DIA NO.	PART NUMBER	DESCRIPTION	SERIAL NUMBER	MACHINE TYPE	NO REQ'D
1	8310506	PIN, ϕ 10×45			2
2	8310502A	LINEAR, ACTUATOR, KIT	0~100220	RS32L	1
			0~100109	RS26L	
	8310590A	LINEAR, ACTUATOR, KIT	100221~	RS32L	
			100110~	RS26L	
3	8310320	PIN, COTTER			2
4	1121008	HEX NUT, M10			2
5	8310503	BRACKET, SQUEEGEE			1
6	8310240	VACUUM HOSE			1
7	1123115	LOCK NUT, M12			1
8	8310550	CASTER, 2 INCH			2
9	8310501	COMPRESSION SPRING,			1
10	8310504	ARM, SQGE LIFTING			1
11	8310505	FLEX BUSHING, TPU			2
12	8210525	SHORT CLAMP ASSEMBLY			1
13	1221575	SCREW, PAN HEAD, M5×75			1
14	8118624	SHAFT			1
15	8118623	SPACER			1
16	1123507	LOCK NUT, M5			1
17	8311514	CLAMP ASSEMBLY, RS26L			1
	8310514	CLAMP ASSEMBLY, RS28L / RS32L			1
18	8311531	REAR BLADE, LINATEX, RS26L			1
	8310531	REAR BLADE, LINATEX, RS28L / RS32L			1
	8311541	REAR BLADE, PU, RS26L, OPTION			1
	8310541	REAR BLADE,PU,RS28L/RS32L,OPTION			1
19	8311561	SQUEEGEE HOSING, RS26L			1
	8310561	SQUEEGEE HOSING, RS28L / RS32L			1
20	8311562	RETAINER, SQUEEGEE, RS26L			1
	8310562	RETAINER, SQUEEGEE, RS28L / RS32L			1
21	8311560	SQUEEGEE ASSEMBLY, RS26L			1
	8310560	SQUEEGEE ASSEMBLY, RS28L / RS32L			1
22	8311534	FRONT BLADE, LINATEX, RS26L			1
	8310534	FRONT BLADE, LINATEX, RS28L / RS32L			1
	8311544	FRONT BLADE, PU, RS26L, OPTION			1
	8310544	FRONT BLADE,PU,RS28L/RS32L, OPTION			1
23	1021835	BOLT, HEX HEAD, M8×35			2
24	8210518	KNOB, M8			4
25	8115404	SLEEVE, ϕ 8× ϕ 12.7×12.7			2
26	8116009	PROTECTIVE WHEEL			2
27	1421824	FLAT WASHER, M8× ϕ 24×2			4
28	1123810	LOCK NUT, M8			2
29	8210309	PIN, COTTER			2
30	8310311	PIN, ϕ 16×150			1
31	8310508	PIN, ϕ 12×100			1
32	8310509	EXTENSION SPRING			2
33	1031212	BOLT, HEX HEAD, M12×120			1
34	1421030	FLAT WASHER, M10× ϕ 30×2.5			1
35	1021060	BOLT, HEX HEAD, M10×60			1
36	8310507	ADAPTER			1

SOLUTION & DETERGENT SYSTEM



SOLUTION & DETERGENT SYSTEM

DIA NO.	PART NUMBER	DESCRIPTION	SERIAL NUMBER	MACHINE TYPE	NO REQ'D
1	8310124	ELBOW, G1/2			1
2	1962025	CLAMP 16-25MM			8
3	8310901	TUBING, ID=16MM L=500MM			1
4	8310375	ELBOW, CHEMICAL CONNECTOR			1
5	8310371	SOLENOID VALVE, 24VDC			1
6	1421510	FLAT WASHER, M5× ϕ 10×1.0			2
7	1422513	LOCK WASHER M5			2
8	1221512	SCREW, PAN HEAD, M5×12			2
9	8310902	TUBING, ID=16MM L=40MM			1
10	8310903	TUBING, ID=12MM L=175MM			1
11	8310374	FITTING, PLASTIC			1
12	8310904	TUBING, ID=12MM L=210MM			1
13	8310905	TUBING, ID=4MM L=330MM			3
14	8310930A	DETERGENT PUMP, KIT			1
15	1914080	TIE, 3×80MM			19
16	8310910	TUBING, ID=4MM L=100MM			3
17	8310467	FITTING			7
18	8310909	TUBING, ID=4MM L=30MM			4
19	8310466	ONE WAY VALVE			1



- LITHIUM BAT: Lithium-ion batteries
- FU: 150A fuse
- CW: Off-board charger interlock switch
- BR1: Main controller circuit breaker, 5A
- i-synergy SW: i-synergy starting up switch
- AS: Alarm lamp switch
- LED2: Alarm lamp
- CH1: On-board battery charger
- CH2: Off-board battery charger port

- LED1: Work LED light
- BR2: Brake circuit breaker, 10A
- M3: Traction motor
- M1: Brush motor, left
- M6: Brush motor, right
- M2: Vacuum motor
- AP: Accelerator Pedal, sensor
- WP: Proximity sensor
- SL: Solution tank water level sensor

- RF: Recovery tank water level sensor
- RT: Reverse switch
- ST: Seat switch
- EG: Emergency stop switch
- M4: Scrub head lifting actuator
- M5: Squeegee lifting actuator
- BK: Brake coil
- DP: Detergent pump
- EW: Solution solenoid valve
- HN: Horn