



i28BTL+

Auto Scrubber

i-SYNERGY
Cleaning Management in Motion

Our state-of-the-art fleet management software, i-Synergy, gives you access to valuable data including location, operating times, charging times, and confirmed clean, in real time, and delivered directly to you by email. Through our all-inclusive subscription service, our industry trained technicians work with you to monitor equipment, and respond to alerts and notifications, all to keep your business running efficiently.

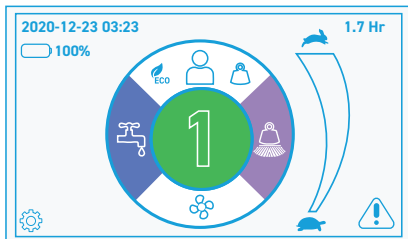
The i28BTL+ is designed to work well in large facilities with a few tight spots due to the 28-32 inch cleaning width. You'll have spotless floors even in the smallest spaces. Ideal for use across industries, lithium-ion batteries provide hours of uninterrupted run time.

i28BTL+

Benefits

- Reduce machine downtime with active maintenance from our dedicated team of technicians
- Monitor your machine locations and performance through i-Synergy Fleet Management
- Increase efficiency and performance through easy to read cleaning reports
- Confirm clean with interested stakeholders through downloadable cleaning reports
- Improve cleanliness with our oversized 26 gallon solutions tank
- Ensure staff and building occupant safety with our lithium-ion batteries
- Save time and money training staff with all-inclusive training and user friendly equipment

Touchscreen Interface



- Settings
- Heavy Mode
- 1.7 Hr Hour Meter
- User Mode
- Fault Indicator
- ECO Mode
- Vacuum Motor
- Solution Flow Control
- 1-Touch Scrubbing
- Deck Pressure Setting
- Speed Control



Technical Specifications

Model Type	USA	I28BTL+ I-SYNERGY
Voltage	VOLT	24
Cleaning Path	INCH	25
Drive System	TYPE	TRACTION-DRIVE
Number of Brushes	PCS	2
Brush Rotation Speed	RPM	210
Brush Motor	HP	.75
Brush Pressure	LB	39-80-119
Squeegee	INCH	40.5
Solution Tank	GALLON	26
Recovery Tank	GALLON	31
Batteries	V/AH	24/240
Type Batteries	STANDARD	LI-ION
Sound Level	DBA	68
Weight without batteries	LB	352
Weight with batteries	LB	660
Run Time per charge	HOURL	3.5 - 4
Cleaning Productivity	FT ² /HR	30,667
Sizes	LXWXH INCH	62x47,6x45
Gradeability	%	11