



i24BT

Auto Scrubber

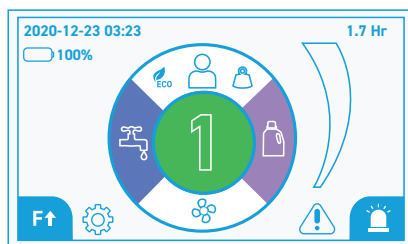
i24BT is yet another cost-effective revolution to roll off ICE's conveyor belt. It's an automated walk-behind scrubber with a dual brush design (24in cleaning width), a steel chassis, and a aluminum brush base/pick-up tool. The i24BT has a 15 gallon solution tank and offers up to 99lb of pad pressure. It's a more compact machine with the capabilities and durability to work alongside our larger models.

i24BT

Benefits

- Intuitive, ergonomic controls for simple operation
- Large 15-gallon solution tank improves working efficiency
- Two pad pressure settings for flexible cleaning
- 150 AH batteries, on-board charger, pad drivers, and squeegee assembly included
- Quickly change-out squeegees, pads, or brushes without tools
- Quickly change-out squeegees, pads, or brushes without tools
- Traction-drive forward and reverse for easy operation
- Filter assembly and auto-float shutoff protects vacuum motor
- Heavy-duty die-cast aluminum brush deck
- Front red strobe light supports safety while cleaning

Touchscreen Interface



- Modes
- 1.7 Hr Timer
- Fault Indicator
- F↑ Forward/Reverse
- Settings
- Vacuum Motor Switch
- ① Current Mode
- Detergent
- Pressure
- Lights On/Off
- Solution Flow Control



Technical Specifications

Model Type	USA	i24BT
Voltage	VOLT	24
Cleaning Path	INCH	24
Traction Drive System	TRACTION	FORWARD/BACKWARD
Number of Brushes	PCS	2
Brush Rotation Speed	RPM	285
Brush Motor	V/WATT	0.90
Brush Pressure 2-settings	LB	66 and 99
Squeegee	INCH	30
Solution Tank	GALLON	15
Recovery Tank	GALLON	17
Batteries	V/AH	12V, 150 AH
Type Batteries	STANDARD	LEAD ACID
Sound Level	DBA	68
Weight without batteries	LB	231
Weight with batteries	LB	441
Run Time per charge	HOURL	2.5
Cleaning Productivity	FT ² /HR	27,986
Sizes	LXWXH INCH	53x30x42
Gradeability	%	N/A